



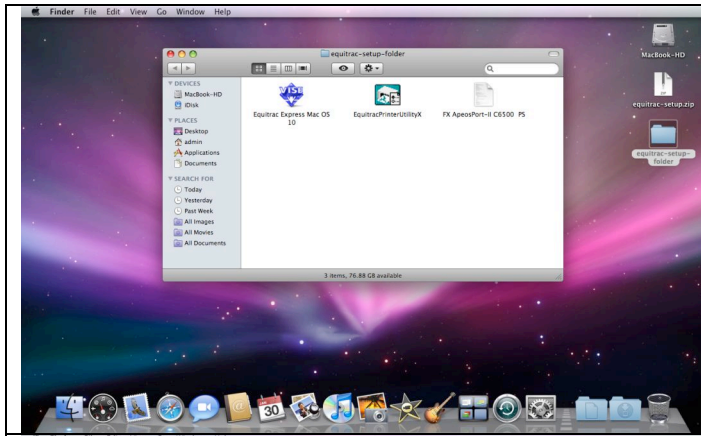


Canadian International School of Hong Kong
Information Technology Department

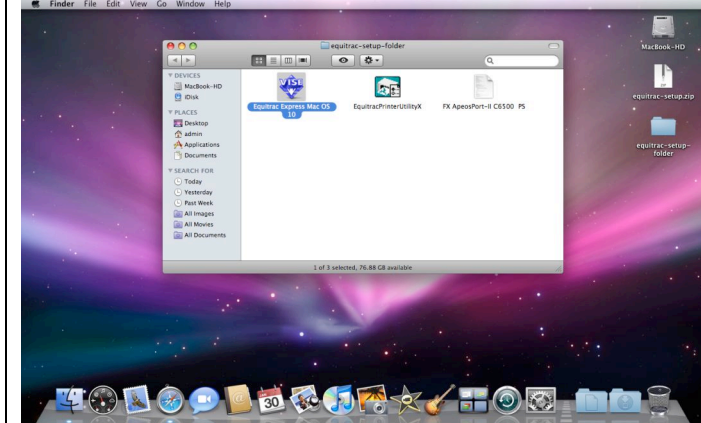
**MacBook Setup Procedure For Multi Functional Copier
(MFC) Follow-You (Assistant)**

This document shows how to setup access to Multi Functional Copier (MFC) Follow-You (Assistant) in Mac OS X. It does not show how to use the MFC. The pictures in this document are from Leopard (Mac OS X 10.5) and the procedure is the same for Tiger (Mac OS X 10.4).

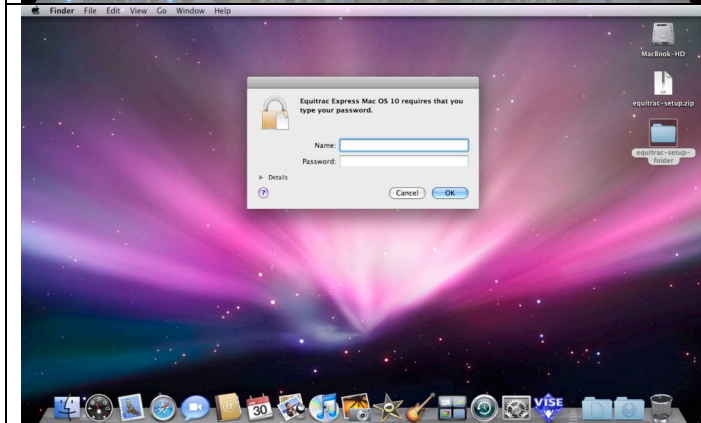
	<p>Download/save equitrac-setup.zip to the Desktop.</p> <p>Double click equitrac-setup.zip on its icon to run it.</p>
	<p>equitrac-setup-folder should appear on the Desktop.</p> <p>Double click equitrac-setup-folder to open it.</p>



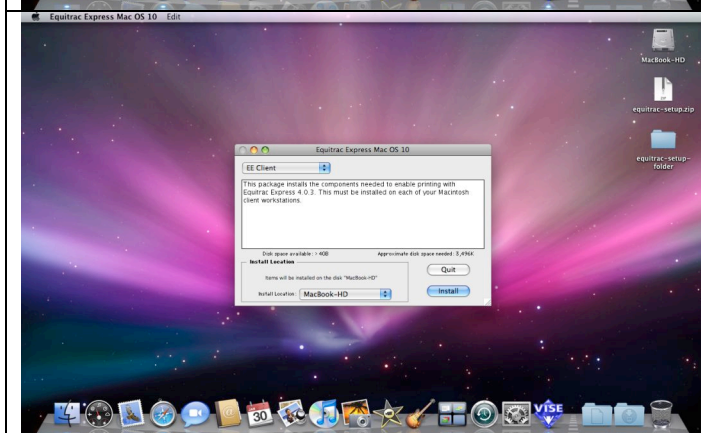
equitrac-setup-folder contains three files.



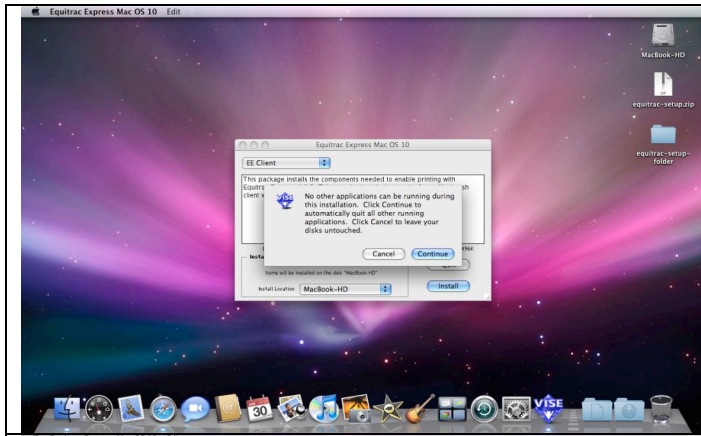
Double click **Equitrac Express Mac OS 10** on its icon to run it.



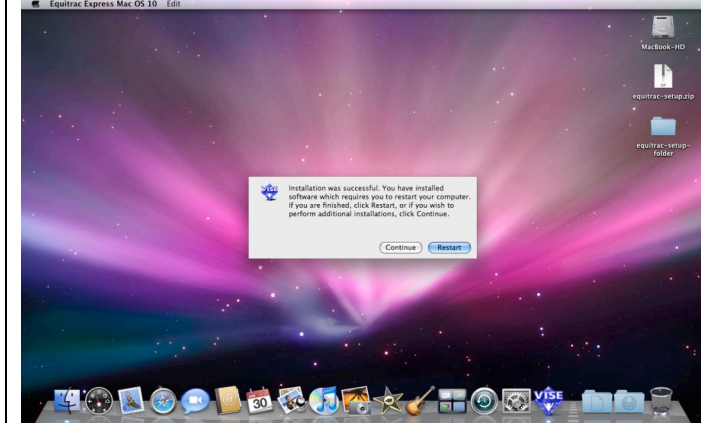
You will be prompted to authenticate. Please enter your name and password and click **OK**.



Click **Install**.



Read the notice and click Continue.

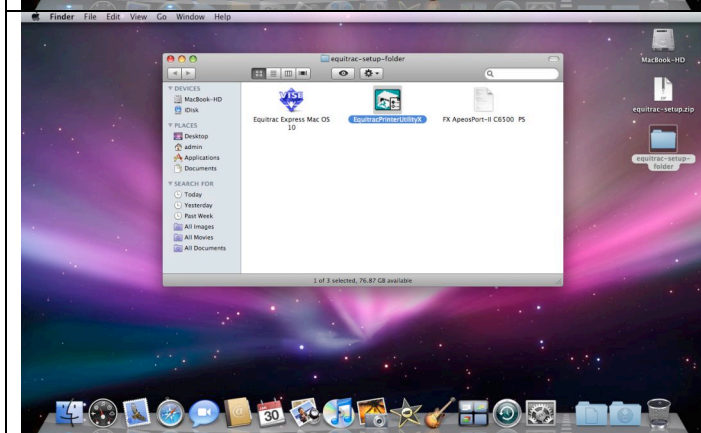


Read the notice and click Restart.

After the restart please log into your account.



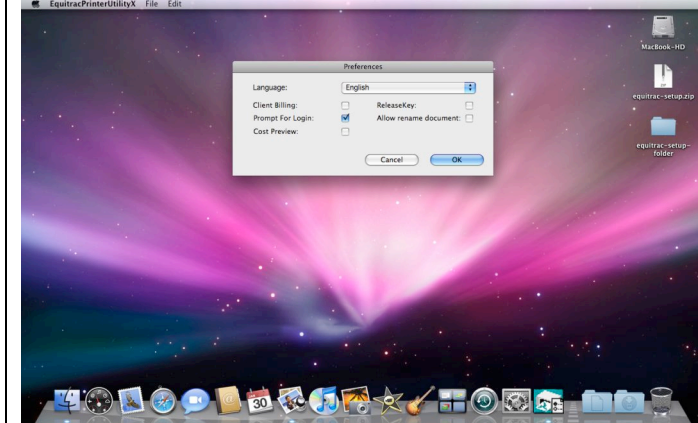
Double click **equitrac-setup-folder** to open it.



Double click **EquitracPrinterUtilityX** on its icon to run it.



Click on **EquitracPrinterUtilityX** in the top menu bar and choose **Preferences**.

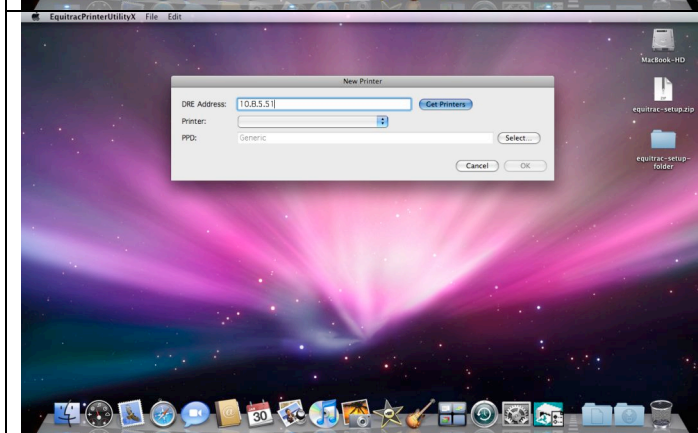


Untick Client Billing and Cost Preview.

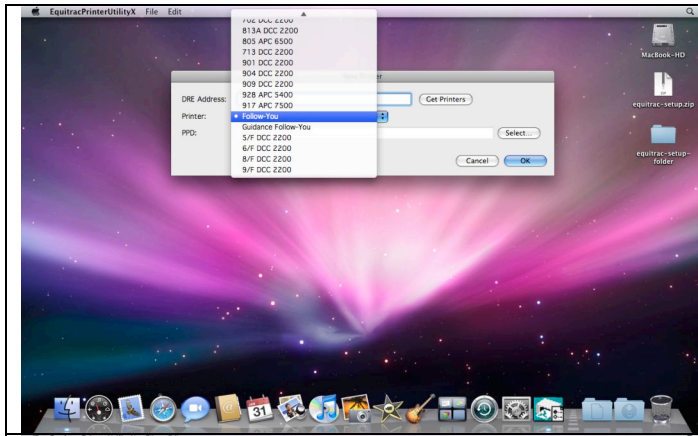
Make sure Prompt For Login is ticked and click OK.



Click on **File** in the top menu bar and choose **New Printer**.

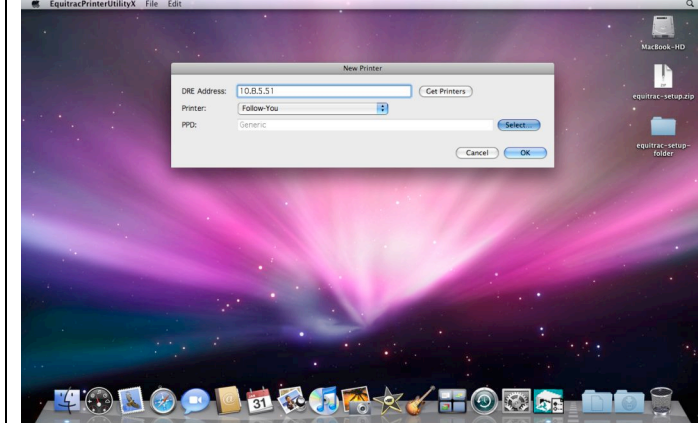


Enter **10.8.5.1** and click on **Get Printers**.

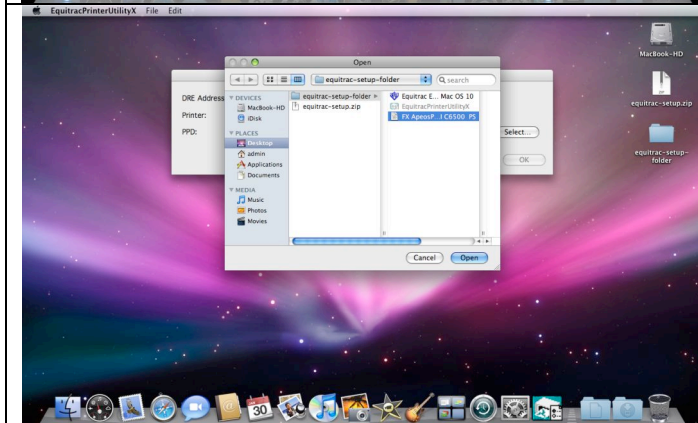


Click on the drop down menu and choose **Follow-You** which is near the bottom of the list.

Follow-You is the name of the print queue for printing to MFC.

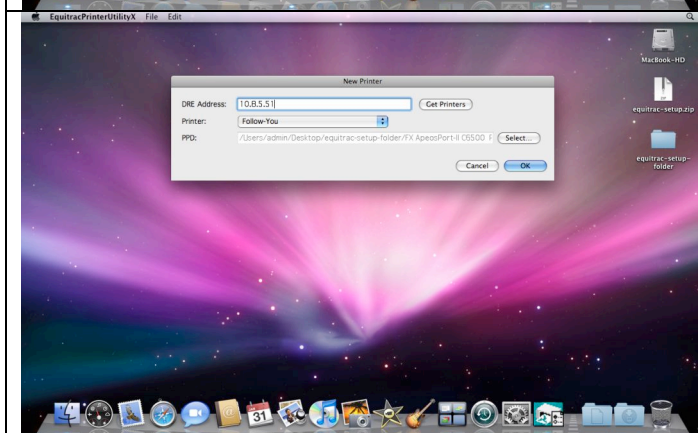


Make sure Follow-You appears in the menu and click on Select.



Use the Open window to look inside the **equitrac-setup-folder** on the Desktop.

Select **FX ApeosPort-II C6500 PS** and click Open.



Click OK to finish.