



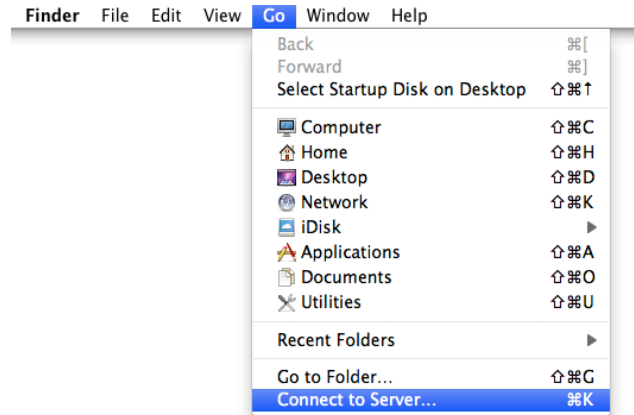
Canadian International
School of Hong Kong

MathType 6.0

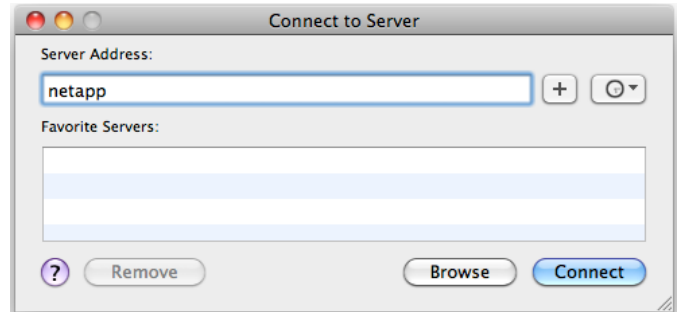
Installation Guide

Victor Chan

1. Under **Finder** → **Go** → **Connect to Server...**



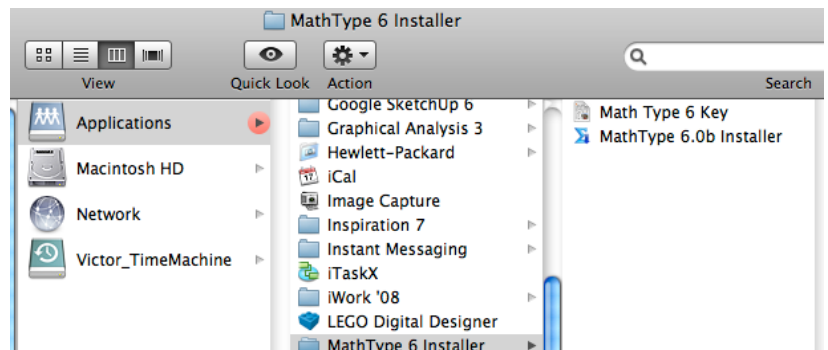
2. Type in “**netapp**” → Click on “**Connect**”



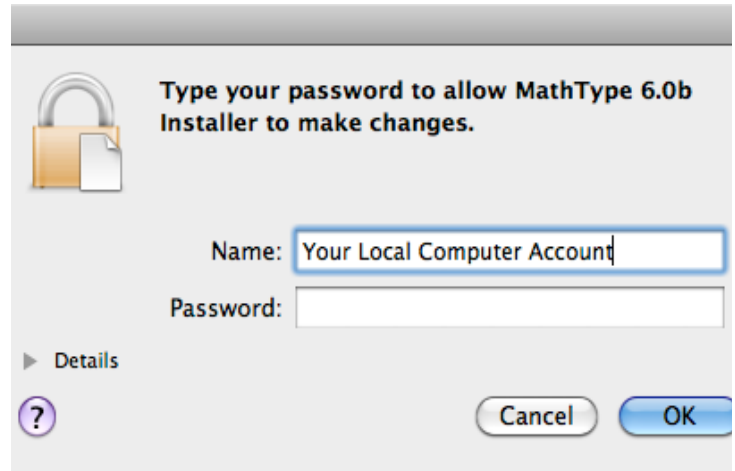
3. Login as “**Guest**” → Click “**Connect**”



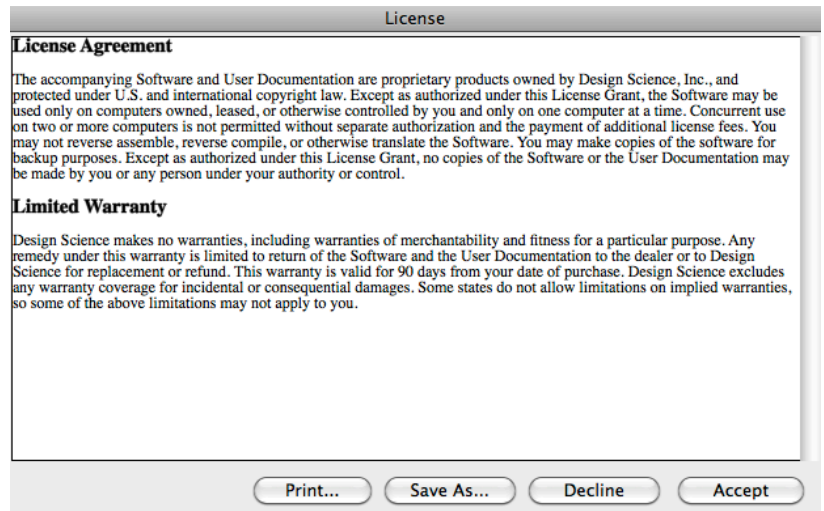
4. Locate “**MathType 6 Installer**” under NetApp’s Application Folder. Drag “**MathType 6.0b installer**” on to your **Desktop**.



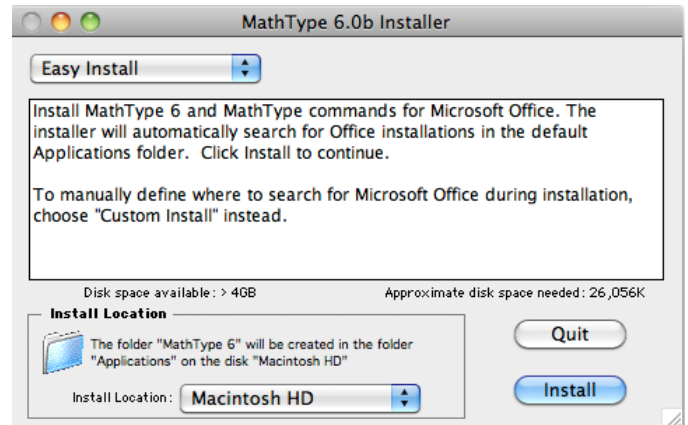
5. In order to install software on your computer, you will need to enter your User account of your MacBook



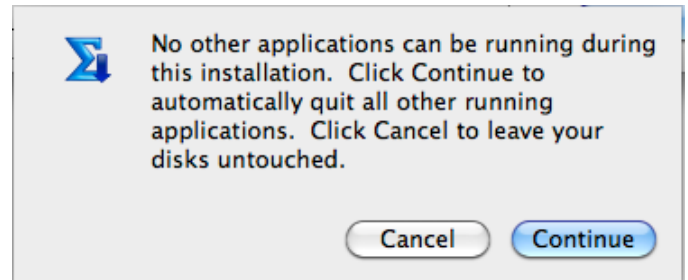
6. Click “Accept” to the License Agreement.



7. Click “Install” to begin



8. The installer will close every other running Applications, if you have un-save documents, save it now and click “Continue”

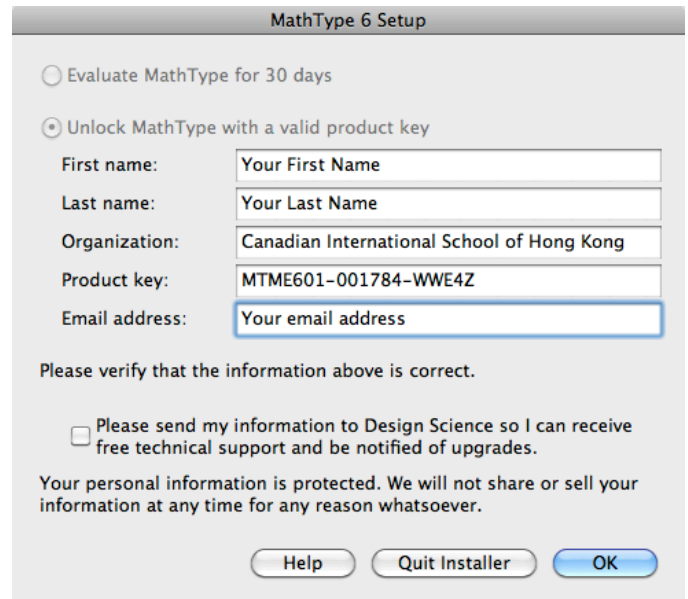


9. Fill in your “First name”, “Last name” and “Email address”.

“Organization” : “Canadian International School of Hong Kong”.

“Product key” : MTME601-001784-WWE4Z

Then Click “OK” when finish



10. Installing files on to your MacBook, this process will take couples of minutes.



11. Click “**Continue**” The Installer will open 2 programs “**Word**” Then “**PowerPoint**” to install a Tools icon “**Insert Eqn**” onto your “Tools Bar”

**Do not close Word or PowerPoint, the installer will close it automatically.

If you have accidentally closed it, you might need to reinstall it by running a script under

Application → MathType 6 → Office Support →

AddinsertEqnToWord2008 and
AddinsertEqnToPPT2008

12. Wait until you see this Box, Click “**Quit**” to finish.

